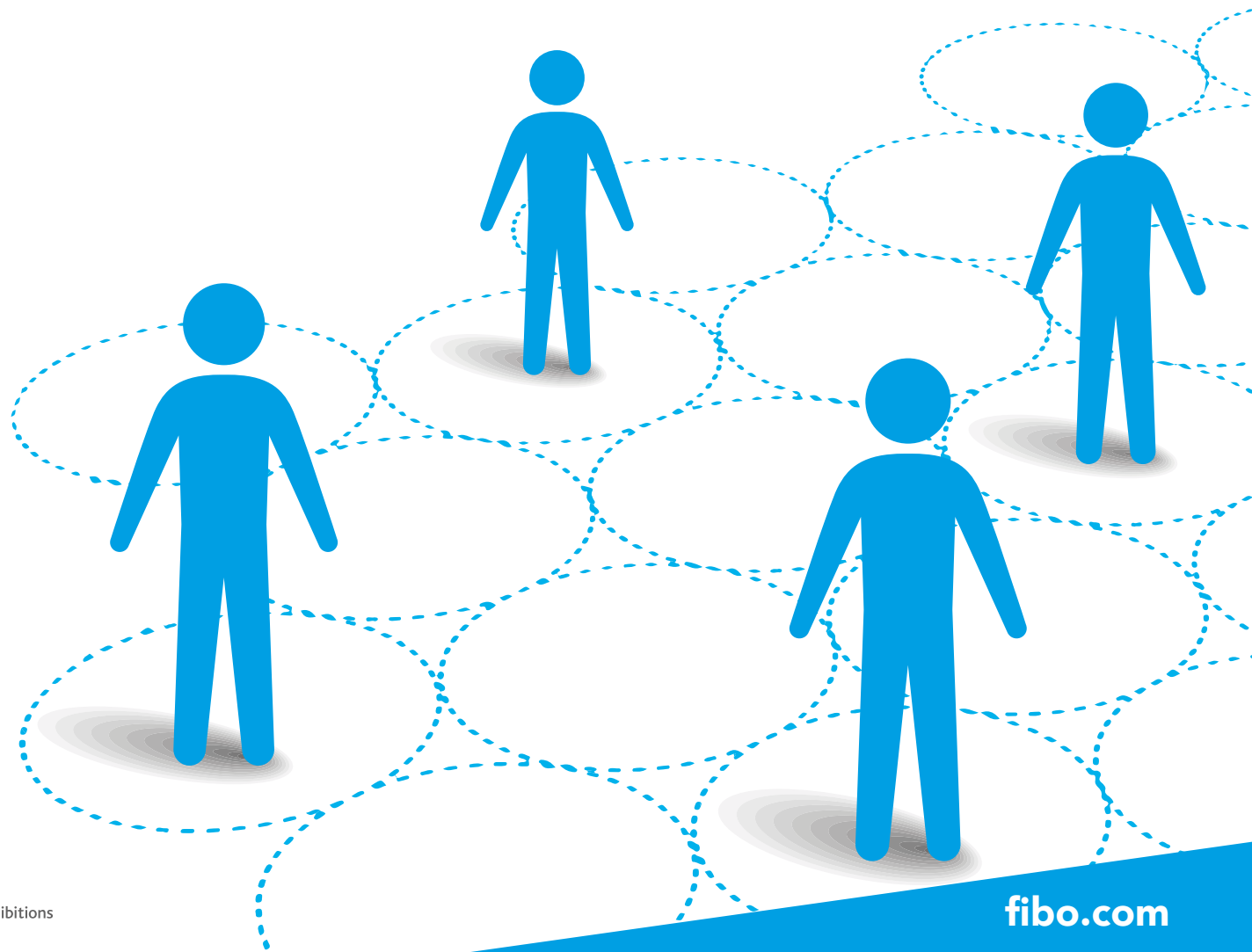


8 - 11 APRIL 2021
EXHIBITION CENTRE COLOGNE

**THE LEADING INTERNATIONAL TRADE
SHOW FOR FITNESS, WELLNESS & HEALTH**

**BE SAFE.
STAY HEALTHY.**



HYGIENE

VISIT SAFE

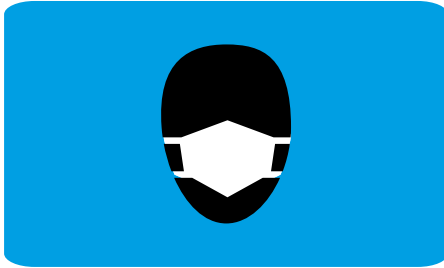
Under the item VISIT SAFE we have compiled all the measures that ensure that trade show visitors can safely move about the entire Exhibition Centre.

This includes comprehensive hygiene rules such as:



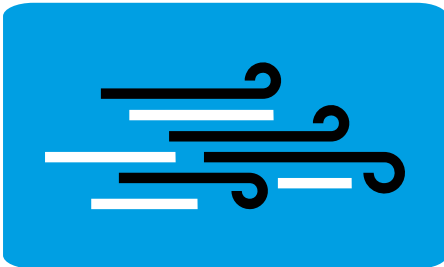
DESINFECTION AND CLEANING

We put up disinfectant dispensers at all important points around the premises. High-touch surfaces (e.g. counters, tables, handrails) are cleaned more frequently.



FACE MASKS ARE MANDATORY

FIBO – unless you are seated at e.g. exhibition stands or food service establishments.



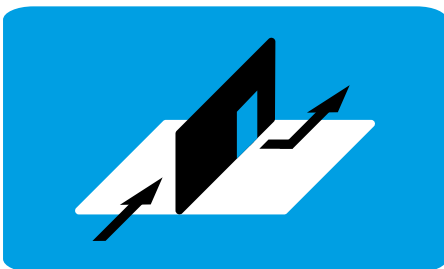
SUFFICIENT AIR HANDLING

The exhibition facilities of Koelnmesse are equipped with state-of-the-art air-handling systems that permit separate exhaust air and supply air handling.



HYGIENE IN SANITARY FACILITIES

The sanitary facilities are cleaned at very short intervals. Sufficient distance for hand washing and sanitising equipment is ensured.



CONTACTLESS PATHS THROUGH THE PREMISES

All doors with the exception of fire protection doors will remain open to reduce contact with surfaces.

The hygiene and infection protection standards in force at the time of the event an especially the regulatory and official provisions an administrative orders as well as the orders by the organisers and the local trade fair company shall be compiled with and followed. | 27.10.2020, subject to change

**BE SAFE.
STAY HEALTHY.**

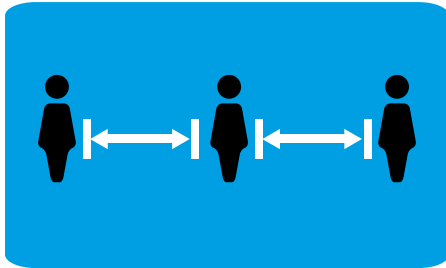
WE CARE
FIBO GLOBAL
FITNESS
FOR YOU

DISTANCING RULES

MEET SAFE

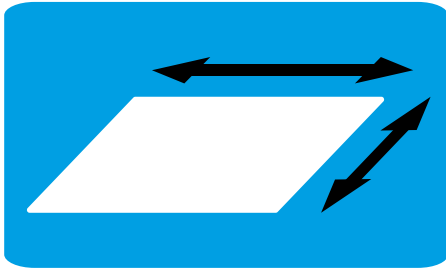
Under the item MEET SAFE we have compiled all the measures that ensure the necessary minimum distance of 1.5 m. These allow us to create the framework for safe business contacts in order to make your trade fair participation a success.

We ensure the minimum distance by means of the following rules in detail:



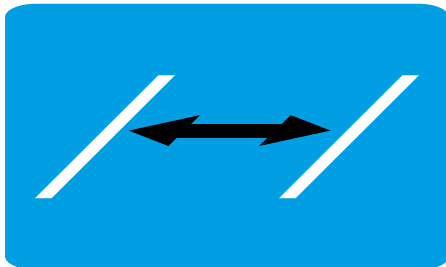
NUMBER OF PARTICIPANTS AT THE EXHIBITION CENTRE

Via online registration and online tickets we constantly keep an eye on the number of visitors and ensure the minimum distance of 1.5 m is always maintained.



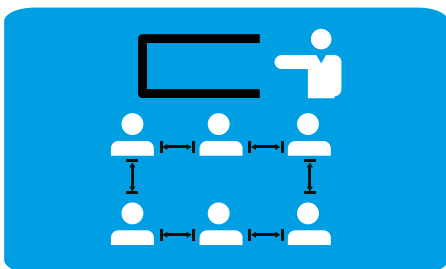
ENLARGEMENT OF AREA

If need be, we will study and plan for enlarging the space for FIBO. This allows us to provide more room for movement for visitors and exhibitors and to safeguard the required safety distance.



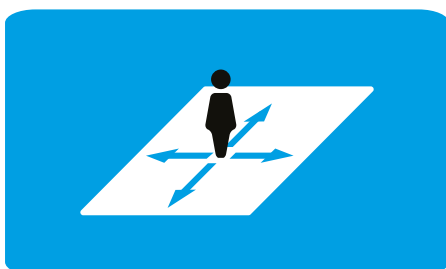
ADAPTATION OF AISLE WIDTH AND TRAFFIC AREAS

In advance we will define the aisle width and traffic areas for FIBO in such a way that the minimum distance of 1.5 m can be maintained.



MEASURES AT CONFERENCES

Conferences, workshops and lectures form an integral part of FIBO. To protect all participants we will also adjust the seating arrangements and number of seats here. We will not offer any standing areas and will mark separate access and exit routes, if necessary.



SUFFICIENT ROOM AT ENTRANCE AND WAITING AREAS

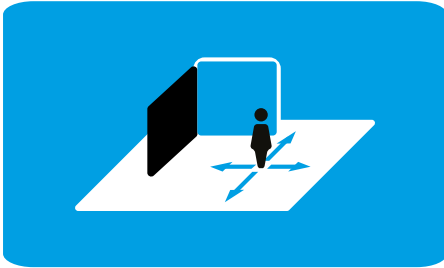
The access situation has been individually adapted to FIBO and we calculate entering speeds and maximum number of persons for each one of our entrances. We also assume the minimum distance for waiting areas.

EXHIBITOR GUIDELINES

SHOW SAFE

Under the item SHOW SAFE we have compiled all the measures that ensure at the exhibition stand that you can network and attend to appointments as usual without endangering your own safety or the safety of others.

This includes the following rules:



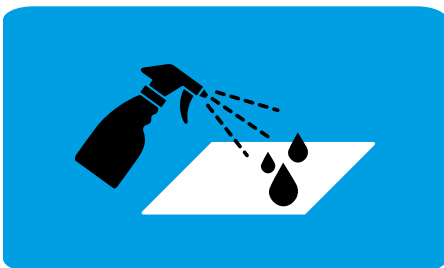
STRUCTURAL DESIGN

In the interest of safe trade show operations the minimum distance of 1.5m shall also apply to exhibition stands. Further recommendations and specifications for stand construction can be found from page 7 onwards.



HANDLING BUSINESS APPOINTMENTS

To protect the health of all the minimum distance of 1.5m should also be maintained during business appointments foregoing physical contact and shaking hands.



HYGIENE

Disinfectants must be made available at each exhibition stand; surfaces must be cleaned at regular intervals and/or after each appointment.



STAND EVENTS

Unfortunately, we will have to forego any party-like events at exhibition stands during Corona times.

STAY SAFE

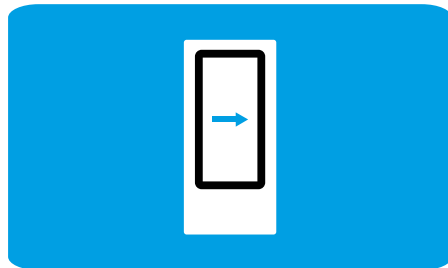
The measures defined under STAY SAFE ensure that gatherings of people are avoided and that you are also safe and in good hands at classical contact points such as food service establishments. Here you will also find instructions for your safety at FIBO.

This includes the following rules:



MONITORING

We will use technical tools to help us monitor, and if need be regulate, the spread of trade show participants and visitor flows at all times.



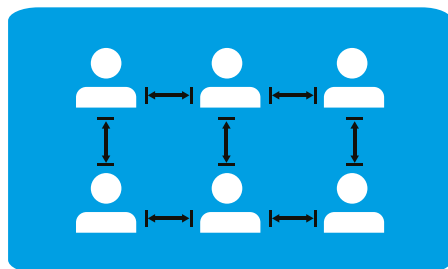
DIGITAL GUIDANCE SYSTEMS

Across a large part of the Cologne Exhibition Centre we already use Koelnmesse's digital guidance system. It allows us to disseminate information in a targeted manner at important hotspots and to draw attention to current regulations.



TRADE SHOW EVENTS

Each event to be held at the Exhibition Centre is checked for its feasibility by Koelnmesse. Unfortunately, we have to forego party-like events in times of Corona.



INDIVIDUAL DESIGN OF HUBS

We know the hubs where queues can form and an increased number of visitors can gather. There will be special rules for cloakrooms, bag search, turnstiles, info counters, parking meters and lifts.



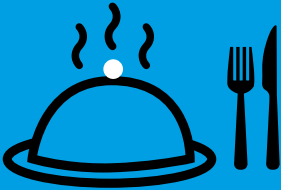
TRACING BY COMPLETE REGISTRATION OF ALL PARTICIPANTS

All trade show participants have already registered by purchasing their tickets online and/or their exhibitor passes in the run-up to the event to obtain their access authorisation. This means we ensure that Reed Exhibitions can quickly identify any contact persons in the event of a Corona infection.



TICKET SALES

Tickets will be exclusively sold online. Tickets are available on mobile devices and allow contactless access.



FOOD SERVICE

Our food service partner has drawn up an extensive concept for food services provided inside the halls and for stand catering that complies with legal requirements. This includes measures such as contactless payment.



DIGITAL SERVICES

We offer various digital services to bring our customers together not only at the Exhibition Centre but also virtually. Each event offers its exhibitors and visitors a wide variety of options for digital trade show participation.



MEDICAL SERVICE

Properly qualified medical services are available on site at any time.



STAYING IN COLOGNE

To also guarantee your safety and health outside the Exhibition Centre as best as possible we closely cooperate with the Cologne hospitality sector. Hotels are obliged to implement the hygiene and infection protection standards currently in force as part of the North Rhine-Westphalian Corona Protection Ordinance.