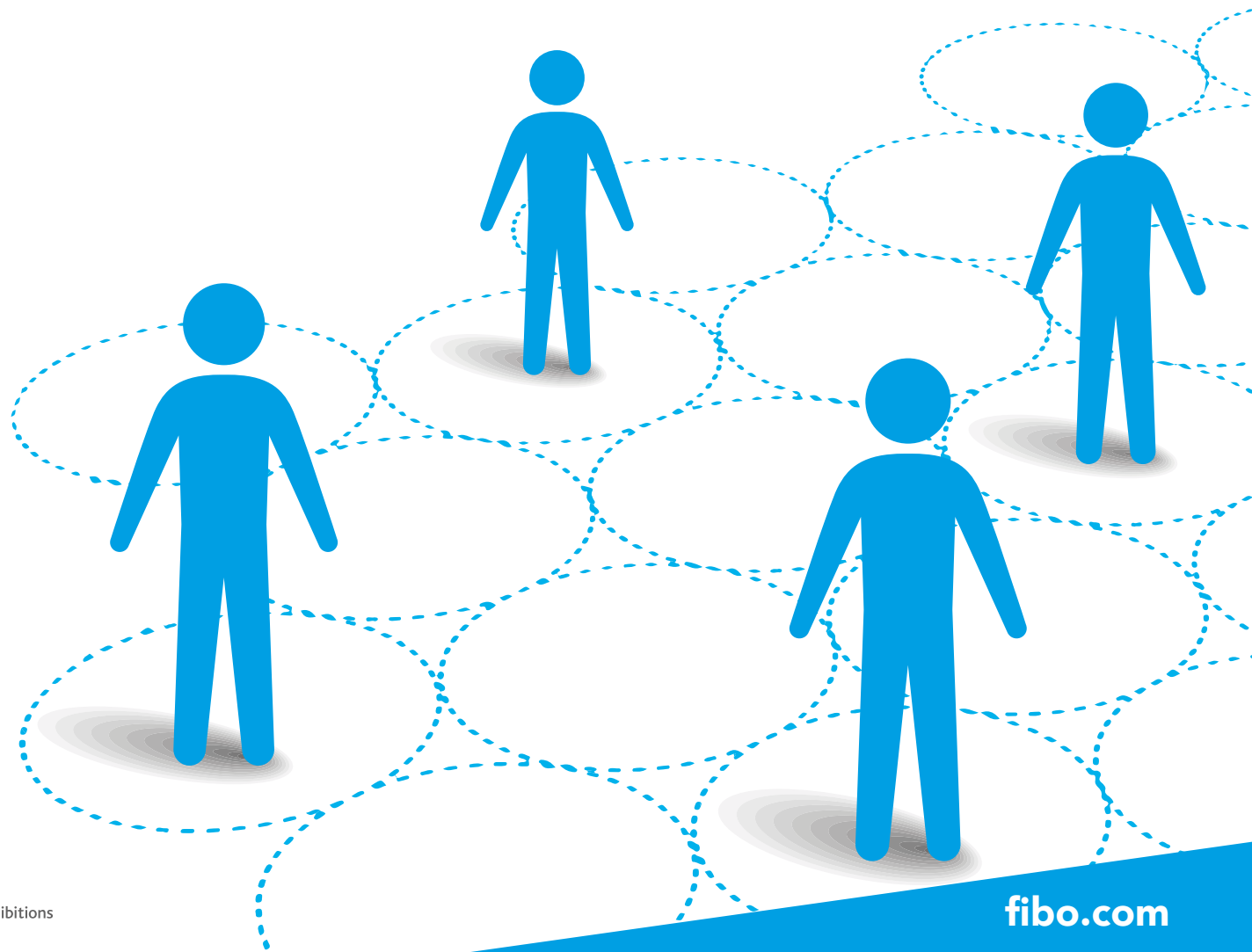


8 - 11 APRIL 2021
EXHIBITION CENTRE COLOGNE

**THE LEADING INTERNATIONAL TRADE
SHOW FOR FITNESS, WELLNESS & HEALTH**

**BE SAFE.
STAY HEALTHY.**



HYGIENE

VISIT SAFE

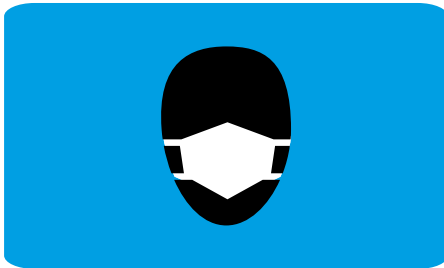
Under the item VISIT SAFE we have compiled all the measures that ensure that trade show visitors can safely move about the entire Exhibition Centre.

This includes comprehensive hygiene rules such as:



DESINFECTION AND CLEANING

We put up disinfectant dispensers at all important points around the premises. High-touch surfaces (e.g. counters, tables, handrails) are cleaned more frequently.



FACE MASKS ARE MANDATORY

FIBO – unless you are seated at e.g. exhibition stands or food service establishments.



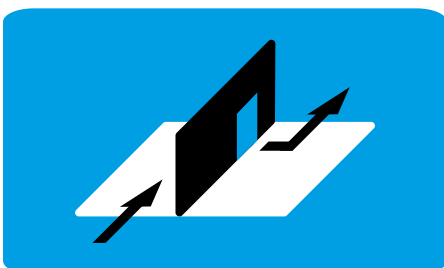
SUFFICIENT AIR HANDLING

The exhibition facilities of Koelnmesse are equipped with state-of-the-art air-handling systems that permit separate exhaust air and supply air handling.



HYGIENE IN SANITARY FACILITIES

The sanitary facilities are cleaned at very short intervals. Sufficient distance for hand washing and sanitising equipment is ensured.



CONTACTLESS PATHS THROUGH THE PREMISES

All doors with the exception of fire protection doors will remain open to reduce contact with surfaces.

The hygiene and infection protection standards in force at the time of the event an especially the regulatory and official provisions an administrative orders as well as the orders by the organisers and the local trade fair company shall be compiled with and followed. | subject to change

**BE SAFE.
STAY HEALTHY.**

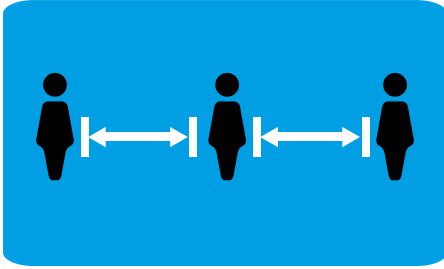
WE CARE
FIBO GLOBAL
FITNESS
FOR YOU

DISTANCING RULES

MEET SAFE

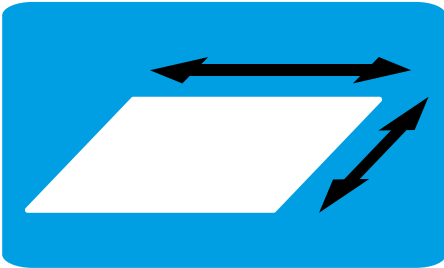
Under the item MEET SAFE we have compiled all the measures that ensure the necessary minimum distance of 1.5 m. These allow us to create the framework for safe business contacts in order to make your trade fair participation a success.

We ensure the minimum distance by means of the following rules in detail:



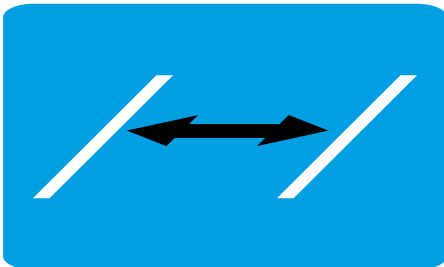
NUMBER OF PARTICIPANTS AT THE EXHIBITION CENTRE

Via online registration and online tickets we constantly keep an eye on the number of visitors and ensure the minimum distance of 1.5 m is always maintained.



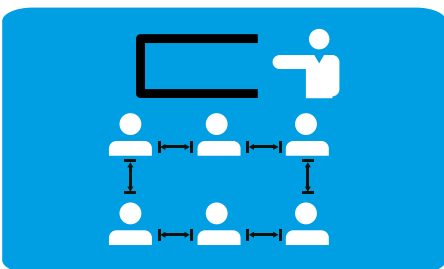
ENLARGEMENT OF AREA

If need be, we will study and plan for enlarging the space for FIBO. This allows us to provide more room for movement for visitors and exhibitors and to safeguard the required safety distance.



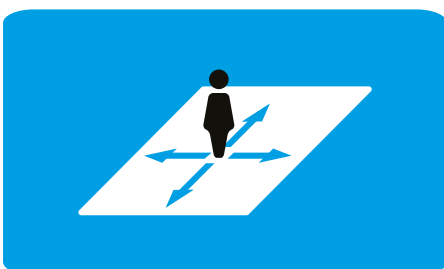
ADAPTATION OF AISLE WIDTH AND TRAFFIC AREAS

In advance we will define the aisle width and traffic areas for FIBO in such a way that the minimum distance of 1.5 m can be maintained.



MEASURES AT CONFERENCES

Conferences, workshops and lectures form an integral part of FIBO. To protect all participants we will also adjust the seating arrangements and number of seats here. We will not offer any standing areas and will mark separate access and exit routes, if necessary.



SUFFICIENT ROOM AT ENTRANCE AND WAITING AREAS

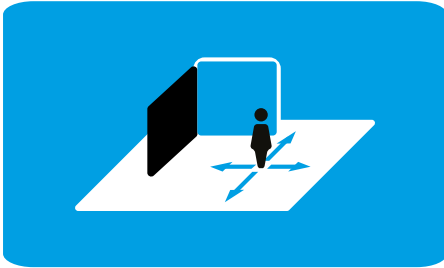
The access situation has been individually adapted to FIBO and we calculate entering speeds and maximum number of persons for each one of our entrances. We also assume the minimum distance for waiting areas.

EXHIBITOR GUIDELINES

SHOW SAFE

Under the item SHOW SAFE we have compiled all the measures that ensure at the exhibition stand that you can network and attend to appointments as usual without endangering your own safety or the safety of others.

This includes the following rules:



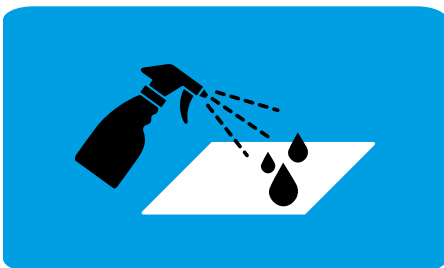
STRUCTURAL DESIGN

In the interest of safe trade show operations the minimum distance of 1.5m shall also apply to exhibition stands. Further recommendations and specifications for stand construction can be found from page 7 onwards.



HANDLING BUSINESS APPOINTMENTS

To protect the health of all the minimum distance of 1.5m should also be maintained during business appointments foregoing physical contact and shaking hands.



HYGIENE

Disinfectants must be made available at each exhibition stand; surfaces must be cleaned at regular intervals and/or after each appointment.



STAND EVENTS

Unfortunately, we will have to forego any party-like events at exhibition stands during Corona times.

STAY SAFE

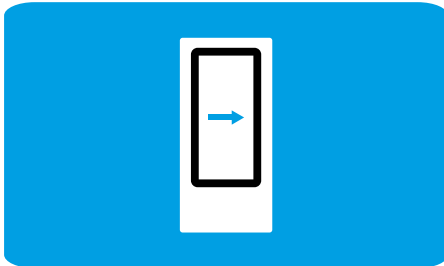
The measures defined under STAY SAFE ensure that gatherings of people are avoided and that you are also safe and in good hands at classical contact points such as food service establishments. Here you will also find instructions for your safety at FIBO.

This includes the following rules:



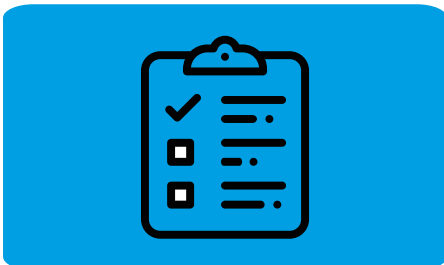
MONITORING

We will use technical tools to help us monitor, and if need be regulate, the spread of trade show participants and visitor flows at all times.



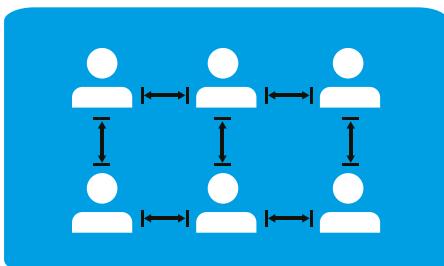
DIGITAL GUIDANCE SYSTEMS

Across a large part of the Cologne Exhibition Centre we already use Koelnmesse's digital guidance system. It allows us to disseminate information in a targeted manner at important hotspots and to draw attention to current regulations.



TRADE SHOW EVENTS

Each event to be held at the Exhibition Centre is checked for its feasibility by Koelnmesse. Unfortunately, we have to forego party-like events in times of Corona.



INDIVIDUAL DESIGN OF HUBS

We know the hubs where queues can form and an increased number of visitors can gather. There will be special rules for cloakrooms, bag search, turnstiles, info counters, parking meters and lifts.



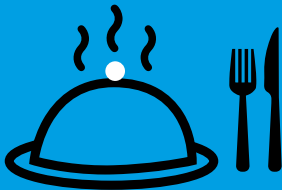
TRACING BY COMPLETE REGISTRATION OF ALL PARTICIPANTS

All trade show participants have already registered by purchasing their tickets online and/or their exhibitor passes in the run-up to the event to obtain their access authorisation. This means we ensure that Reed Exhibitions can quickly identify any contact persons in the event of a Corona infection.



TICKET SALES

Tickets will be exclusively sold online. Tickets are available on mobile devices and allow contactless access.



FOOD SERVICE

Our food service partner has drawn up an extensive concept for food services provided inside the halls and for stand catering that complies with legal requirements. This includes measures such as contactless payment.



DIGITAL SERVICES

We offer various digital services to bring our customers together not only at the Exhibition Centre but also virtually. Each event offers its exhibitors and visitors a wide variety of options for digital trade show participation.



MEDICAL SERVICE

Properly qualified medical services are available on site at any time.



STAYING IN COLOGNE

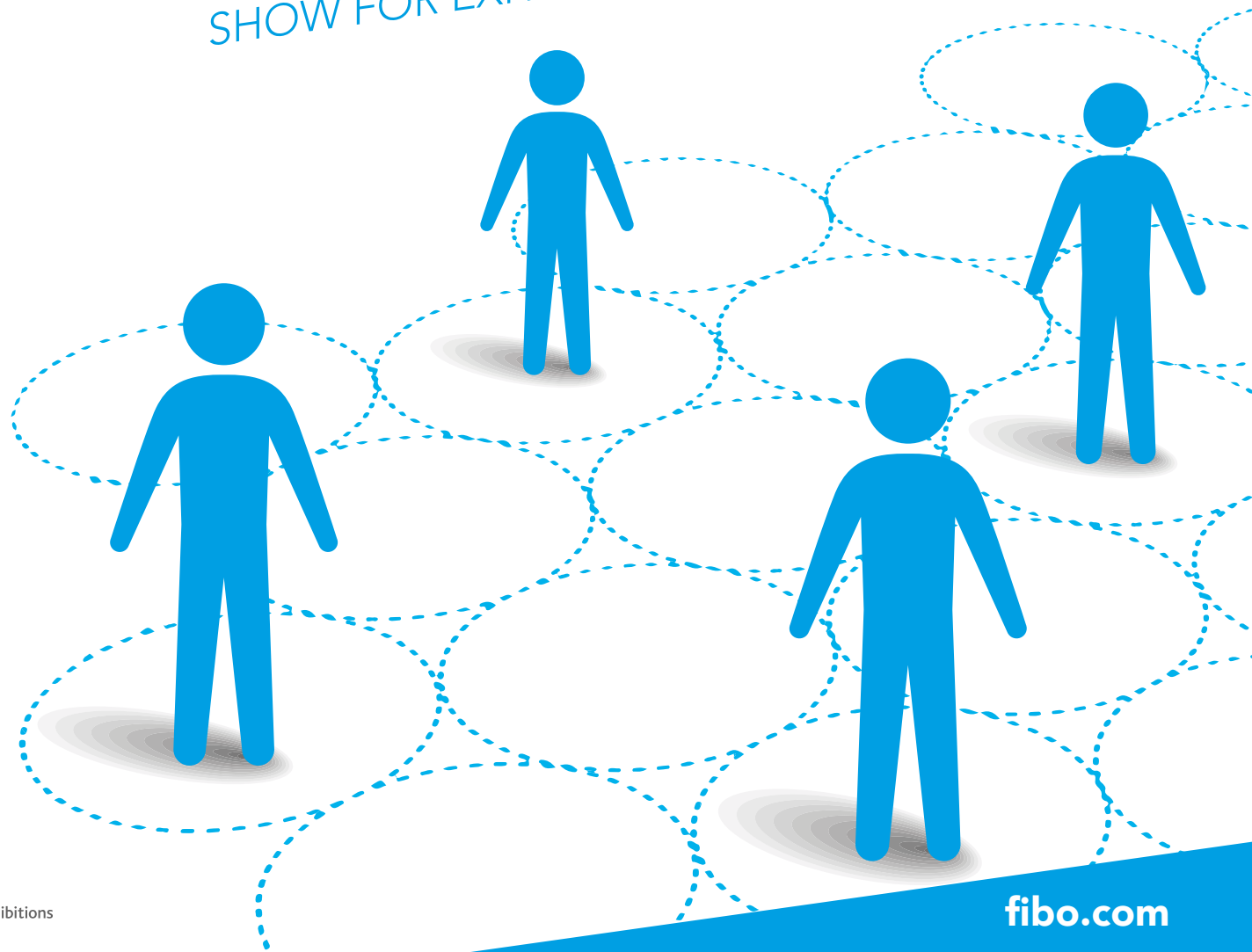
To also guarantee your safety and health outside the Exhibition Centre as best as possible we closely cooperate with the Cologne hospitality sector. Hotels are obliged to implement the hygiene and infection protection standards currently in force as part of the North Rhine-Westphalian Corona Protection Ordinance.

8 - 11 APRIL 2021
EXHIBITION CENTRE COLOGNE

**THE LEADING INTERNATIONAL TRADE
SHOW FOR FITNESS, WELLNESS & HEALTH**

**BE SAFE.
STAY HEALTHY.**

NOTES ON PLANNING THE FIBO TRADE
SHOW FOR EXHIBITORS



GENERAL NOTES

The Corona Protection Ordinance of the State of North Rhine-Westphalia lays down the regulations for holding trade shows. It is essential to ensure that the required minimum distance of 1.5 metres is maintained throughout the entire exhibition centre.

Reed Exhibitions Deutschland ensures that the prescribed hygiene and safety regulations are complied with at FIBO by means of a comprehensive hygiene and infection protection concept. You will find our main measures on our website fibocom.com/stayhealthy. This means we are ready for holding the FIBO in April 2021 and look forward to offering our customers a platform for their business again.

It is important for you as an exhibiting company to know that the number of visitors to the individual stands is not regulated as long as the minimum distance of 1.5 metres is guaranteed. Short-term non-compliance with the minimum distance rules (e.g. when walking past each other) is possible, provided that face masks are worn. The number of visitors allowed at the stand thus depends essentially on the type of stand design.

The respective stand operator is responsible for implementing the required measures at the exhibition stand. We are aware of the current uncertainties on the exhibitors' part and have therefore compiled important recommendations and binding measures to help you with your trade show planning and your trade show appearance. Should you have any other questions or need assistance in planning your FIBO presentation, feel free to contact us at any time. Please contact your respective contact person in the FIBO Team.

RECOMMENDATIONS AND SPECIFICATIONS FOR STAND CONSTRUCTION

1. To keep the necessary minimum distance of 1.5 metres and to implement the recommendations and specifications for stand construction, we recommend a minimum stand size of 16m². The FIBO Sales Team will be happy to advise you on the selection of the appropriate stand.
2. Plan your stand with sufficient space to ensure that minimum distances are kept during activities at the stand. Avoid unnecessary bottlenecks.
3. In meeting areas, the seat spacing between tables and chairs shall be such that a minimum distance between persons of at least 1.5 metres is ensured.
4. If the minimum distances cannot be kept at specific points, other measures such as shielding/guards in seating areas are also possible.
5. With large or complex stands, it may be difficult to keep track of the number of people at the stand. In such cases, plan separate entrances and exits and cordoning off the stand (e.g. Tensa barriers) in order to keep an eye on the number of visitors to ensure minimum distances.
6. Plan a counter or counter handling, a presentation or an exhibit, if possible in such a way that they are positioned about 1.50 m into the stand. Place exhibits with sufficient open space at the stand.

7. In order to provide space for movement in the aisles around the stand, placing product information directly at the stand perimeter to the aisle may only be possible to a limited extent. Please take this into account when planning your stand.
8. If you are planning two-storey stands, please allow for sufficiently wide stairs or one-way traffic routes.
9. An essential criterion in the current times is good ventilation of the exhibition stands. The exhibition halls in Cologne comply with high technical standards including separate supply and exhaust air handling. To ensure that this is also the case at your stand, closed rooms with closed ceilings - especially in meeting areas - are not permitted. For two-storey stands, the ground floor must be designed to be as open as possible to the sides.
10. Pass on these measures to your stand construction company. German stand construction companies, through their association, have sufficient information on appropriate stand construction plans to ensure that the specifications are adequately taken into account.
11. Alternatively, our stand construction partner STANDout offers you custom-built exhibition stands that meet the specifications and also offer you a flexible time frame for stand construction bookings. If you are interested in STANDout's stand construction service, please contact our colleagues at:

STANDout GmbH
Messeplatz 1
1021 Vienna
T: +43 1 727 20 – 6101
E: wien@standout.eu

HYGIENE RECOMMENDATIONS AND SPECIFICATIONS FOR EXHIBITION STANDS

1. In the interest of the health of all trade fair participants, please ensure that the generally applicable hygiene rules are observed at your stand, e.g. no shaking hands or physical contact. Please observe the general hygiene recommendations of the Robert Koch Institute (RKI).
2. Make disinfectants available for your staff and visitors at your stand.
3. Clean frequently used contact surfaces such as counters, tables, showcases or exhibits as required and/or after each visitor change.
4. Handing out sweets or other give-aways to all stand visitors from large containers is currently not permitted. Distribution of such items is possible for stand-manning staff as long as the hygiene regulations are observed.
5. It is as mandatory to wear a face mask at the stands as it is on the exhibition grounds. Exceptions to this rule are the outdoor area, as well as seats at the stands or in food service establishments - provided that sufficient distances can be maintained.
6. Make sure that only staff without symptoms of a cold is manning your stand.

7. Stand parties or comparable activities are unfortunately not permitted at present, as the generally applicable hygiene rules can usually not be observed here.
8. The hygiene measures taken at your stand must be documented in a hygiene concept. This concept must also indicate who is responsible for implementing the concept at the exhibition stand.

WE CARE
FIBO GLOBAL
FITNESS
FOR YOU

NOTES ON CATERING AT EXHIBITION STANDS

1. Please observe the general hygiene requirements for serving and storing food.
2. You can continue cooperating with a caterer of your choice as long as the regulations for catering establishments in accordance with the Corona Protection Ordinance of the state of North Rhine-Westphalia are complied with.
3. Catering services with open buffet and/or self-service are currently not permitted. The same applies to open containers for sweets, cutlery or the like.
4. Koelnmesse and Koelnmesse's contract caterer, Aramark Restorations GmbH, will be happy to submit a quote for your stand catering that meets the hygiene requirements. If you are interested in our catering services, please contact our partner Aramark (phone: +49 221 2848584, e-mail: Vertrieb.Koelnmesse@aramark.de).

Please note that Reed Exhibitions cannot give any planning approval with regard to infection control. As stand operator, you are responsible for infection control at your stand.

WE ARE THERE FOR YOU!

Should you have other questions or require individual support for planning your FIBO appearance, please feel free to contact us.

CONTACT PERSONS



KAROLINA MOSDORF

Project Manager Sales
T: +49 211 90191-102
F: +49 211 90191-127
M: karolina.mosdorf@reedexpo.de



GUIDO KÜPPER

Key Account Manager
T: +49 211 90191-261
F: +49 211 90191-127
M: guido.kuepper@reedexpo.de



MARINA KELLY

Senior Sales Manager
T: +49 211 90191-190
F: +49 211 90191-127
M: marina.kelly@reedexpo.de



MARCEL NOWAK

Sales Manager
T: +49 211 90191-318
F: +49 211 90191-127
M: marcel.nowak@reedexpo.de



VERONIQUE VOELLMECKE

Junior Sales Manager
T: +49 211 90191-231
F: +49 211 90191-127
M: veronique.voellmecke@reedexpo.de



FLORIAN POMPINO

Junior Sales Manager
T: +49 211 90191-211
F: +49 211 90191-127
M: florian.pompino@reedexpo.de

ORGANISER

Reed Exhibitions Deutschland GmbH
Völklinger Straße 4
40219 Düsseldorf / Germany
reedexpo.de

**BE SAFE.
STAY HEALTHY.**